

Midwest Solutions



Grow your practice with restorative, endodontic and implant capabilities, together in one integrated A-dec® solution.

Expanding your potential just got easier. Now, A-dec+ connectivity makes it possible to integrate Midwest's cutting-edge electric performance into any operatory through your A-dec® Pro delivery. One single, intelligent controller unlocks restorative, endodontic, implant, and apex-locating capabilities, so you're equipped to offer more treatments, attract new patients, and drive practice growth. All with the trusted reliability you expect from A-dec and Dentsply Sirona.

Less complexity. More possibilities.

Replace cluttered tabletop devices and transform your operatory into a streamlined, efficient workspace with one unified system that combines a chair-integrated controller with electric handpieces.

No redundant equipment. No manual adjustments. A single user interface and shared foot control across all procedures simplifies workflow, ensures consistency, and reduces the stress and mental fatigue of switching between devices. You'll enjoy precision control, enhanced efficiency—and countless new possibilities for your practice.



Simplified workflow

Switch seamlessly across restorative, endodontic and implant modes for consistent clinical flow. Customizable presets, file and implant libraries, and on-screen guidance streamline procedures to keep you focused and working in the zone.

Speed without sacrifice

Experience precise torque control and speed every time. Intelligent real-time adjustments and calibration help keep burs, files and drills performing at their best, supporting efficient cutting, confident canal shaping, and predictable implant workflows.

Elegant integration

A modular, three-position controller and true plug-and-play compatibility let you add the Midwest Motor System to any new A-dec 300 Pro and 500 Pro delivery system*, or to retrofit eligible A-dec deliveries with minimal downtime.

Connected intelligence

Stay up to date with A-dec+ software enhancements that improve features and your user experience. Library updates ensure your files and workflows evolve as new solutions emerge—maximizing your investment and minimizing disruption.

**Integrated implantology available only on A-dec 500 Pro (DS7 touchscreen). Integrated apex locator available on A-dec 500 Pro (DS7 touchscreen) and A-dec 300 Pro (DS5 touchscreen).*





Advanced Midwest Endodontics Simplified with A-dec integration

Offer your patients a more comprehensive approach to their oral health by adding endodontics to your treatment options. A-dec's seamless solution includes an apex locator integrated with the Midwest motor for real-time measurements.

All apex data, file visuals, and live metrics are unified on one intuitive screen. Fewer devices and exposed surfaces also mean faster turnover and disinfection time between patients. So you can focus on care, not cleanup.

T1 Endo 6 L

Lighted handpiece

In combination with the apex locator, allows for localization of the apex without a file clamp

Extra small head for optimal view of the root canal

2-year warranty

Endo 6:1

Supports integrated apex location

Allows for apex location without a file clamp, measuring depth directly via the handpiece

Extremely compact head for optimal view of the root canal

Slim design for excellent ergonomics

2-year warranty



Confidence in real time

Staying in the zone just got easier. Customizable workflows help you stay focused and in control, while A-dec's multifunction foot control capability feels natural and intuitive, for more confidence as you move through procedures.

Any time the Midwest handpiece is returned to the holder, the system automatically activates hand file apex location mode, so you can move effortlessly between motor-driven and handheld files, using a single on-screen interface. No more distractions, or having to look away from the screen while you're working.

- Real-time audio and visual feedback
- Photo-based icons for faster, easier file recognition
- Automatic forward/stop based on apex proximity
- Torque control for improved safety and cutting efficiency
- Built-in reciprocating algorithms reduce risk of file breakage



The integrated Midwest apex locator accurately identifies—and shows—the file position relative to the canal apex on the DS7 touchscreen as you work.



Access WaveOne® and Reciproc™ technologies

Get the full advantage of Dentsply Sirona's most trusted file technologies, integrated into your daily workflow. Intelligent, preset-driven reciprocating systems and onboard apex location remove the guesswork for safer, faster, more predictable root canal treatments.

Specifications

Midwest Endodontic

Model	Attachment type	Max speed (rpm)	Light	Spray ports	Length (mm)	Head diameter (mm)	Head height (mm)	Weight (grams)
T1 Endo 6 L	Contra-angle	6,500	Yes	N/A	99	8.7	12.5	59
Endo 6:1	Contra-angle	6,500	No	N/A	93	8.7	11.4	72



Add integrated Midwest implantology with one A-dec solution

Integrated implantology not only allows you to capture additional revenue, it strengthens continuity of care and builds patient trust. Now, instead of referring cases out, you can manage the entire implant workflow—from site preparation to placement—within your own practice.

A-dec gives you the flexibility to add implantology anytime you want, now or in the future, through the existing platform on your A-dec 500 Pro delivery. The plug-and-play Midwest implant motor, sterile tubing pump, and comprehensive implant library are simple to integrate whenever you're ready. No complex installation or extra equipment required.

Implant 20:1 L

- Compact, lightweight design reduces strain on hand, arm and shoulder
- Internal irrigation system delivers cooling fluid directly to the drill shaft
- Saline-resistant stainless steel shaft and gears
- Double LED system for uniform lighting regardless of rotation speed
- Accu-Chuck™ bur-locking and rotation drive mechanism for stability and precision
- Soft Push™ button for quick and comfortable bur release with minimal pressure
- 1-year warranty



Specifications

Midwest Implant

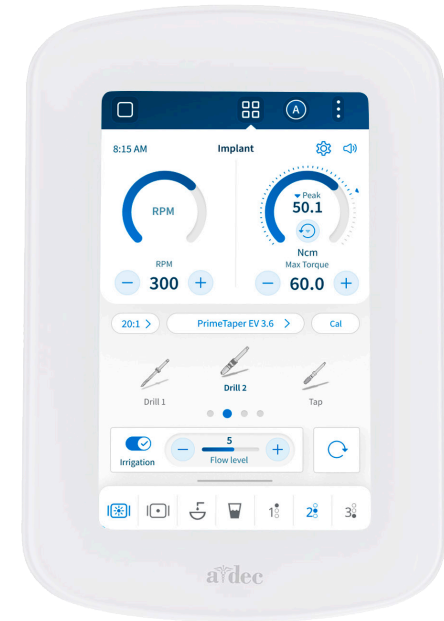
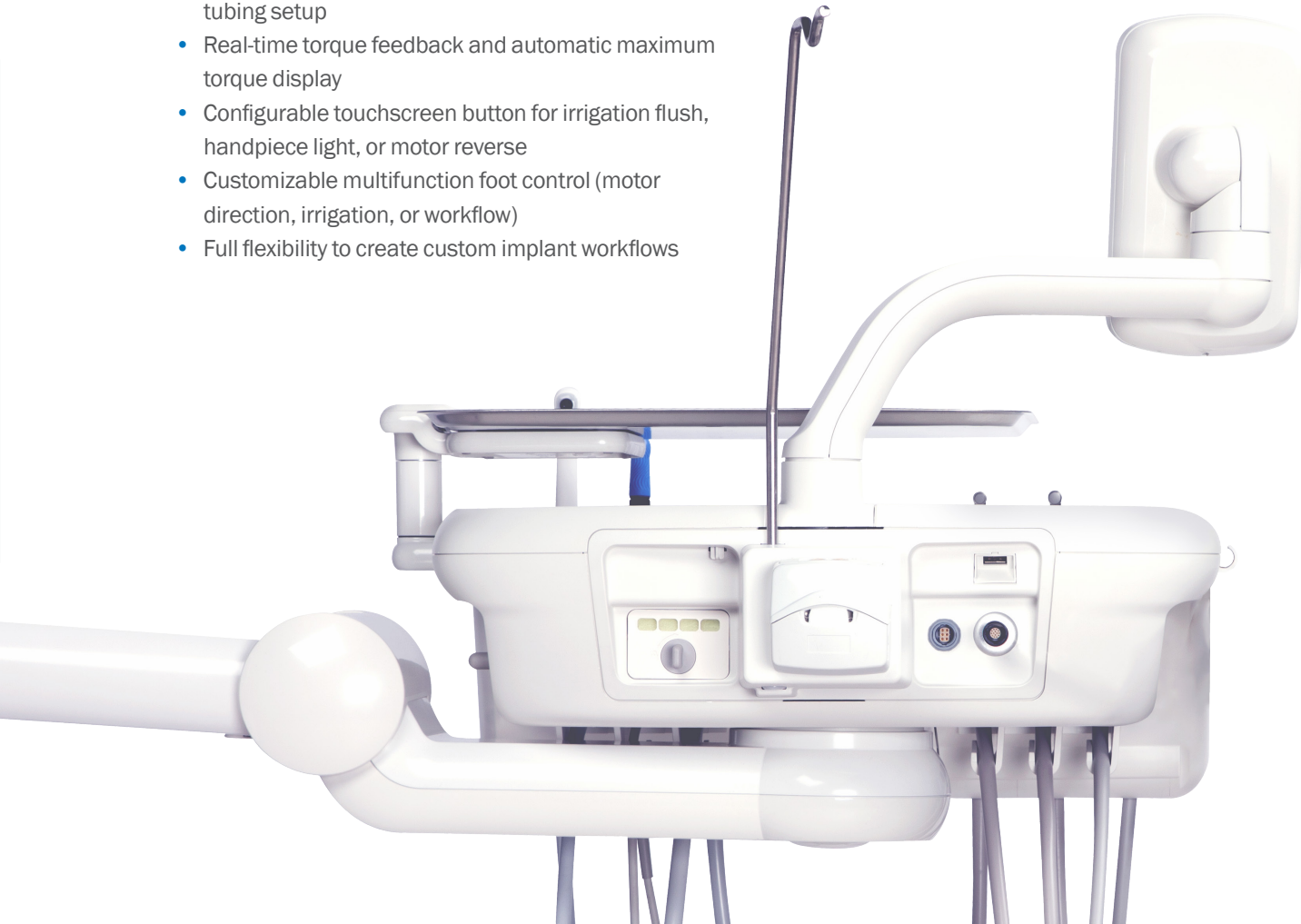
Model	Attachment type	Max speed (rpm)	Light	Spray ports	Length (mm)	Head diameter (mm)	Head height (mm)	Weight (grams)	A-dec Part No
Implant 20:1 L	Contra-angle	2,000	Yes	1 (Sterile)	88	9.8	13.6	78	54.1080.00

Grow your practice, not your footprint

Bulky tabletop devices and intimidating saline bags on your countertops are a thing of the past. The entire Midwest implant system is integrated into the A-dec 500 Pro delivery system, replacing all the clutter with a seamless solution.

With a common foot control and intuitive, unified interface, every movement feels natural and workflows stay consistent, reducing fatigue while maximizing your efficiency. It's a smarter, simpler way to deliver advanced dentistry. All without expanding your footprint.

- Onscreen irrigation rate control with simple sterile tubing setup
- Real-time torque feedback and automatic maximum torque display
- Configurable touchscreen button for irrigation flush, handpiece light, or motor reverse
- Customizable multifunction foot control (motor direction, irrigation, or workflow)
- Full flexibility to create custom implant workflows



Touchscreen shows you real-time RPM, torque, and irrigation monitoring with preset workflows.



Midwest Energo™ Series

Silence nearly perfected

Dentsply Sirona sets new standards with Midwest Energo, one of the quietest 1:5 handpieces they've ever offered. An optimized gear design reduces wear and noise, while the patented 4x2 nozzle spray system mixes air and water coolant outside the head to reduce spray noise*. The electric motor is designed for smooth, quiet operation, which helps reduce stress for you and your patients.

T1 Energo

- Titanium sleeve
- Lightweight (approx. 58 grams)
- Standard and short options
- Robust steel heads
- Ceramic bearings
- Enhanced illumination
- Integrated water filter
- 3-year warranty

T2 Energo

- Stainless steel sleeve
- Lightweight (approx. 72 grams)
- Robust steel heads
- Ceramic bearings
- Enhanced illumination
- Integrated water filter
- 2-year warranty

*Red band only



Ergonomics redesigned

See everything you want to see with nearly no limits. The Midwest Energo series features a smaller head and improved handshape for excellent sight and precise work. Lightweight and robust, the precise titanium and steel designs result in electric handpieces that are among the lightest in their class.

- Easy-to-grasp grip for comfortable and precise work
- Easy-change burs: less force required to push the button to open the chuck
- Improved fiber optic glass enhances illumination up to 40k Lux for a brighter work area
- Safe Head Technology reduces handpiece temperature to help prevent heat-related risks during procedures
- Diamond-Like-Carbon (DLC) coated ceramic bearings reduce friction and increase durability



Specifications

Midwest T1 Energo

Types	Color coding	Gear ratio	Speed (rpm)	Length	Head diameter (mm)	Head height (mm)	Equipment	Spray	Indication
MW T1 Energo 1:5 L	●	1:5	200,000	100 mm	8.9 mm	14.04 mm	Ø 1.6 FG	4*2-nozzle spray	Cavity and crown preparation
MW T1 Energo 1:1 L	●	1:1	40,000	100 mm	8.7 mm	12.25 mm	Ø 2.35 WB	1-nozzle spray	Finishing
MWT1 Energo S 1:5 L	●	1:5	200,000	91 mm	8.9 mm	14.04 mm	Ø 1.6 FG	4*2-nozzle spray	Cavity and crown preparation
MWT1 Energo S 1:1 L	●	1:1	40,000	89 mm	8.7 mm	12.25 mm	Ø 2.35 WB	1-nozzle spray	Finishing

Midwest T2 Energo

Types	Color coding	Gear ratio	Speed (rpm)	Length	Head diameter (mm)	Head height (mm)	Equipment	Spray	Indication
MW T2 Energo 1:5 L	●	1:5	200,000	100 mm	8.9 mm	14.04 mm	Ø 1.6 FG	4*2-nozzle spray	Cavity and crown preparation
MW T2 Energo 1:1 L	●	1:1	40,000	100 mm	8.7 mm	12.25 mm	Ø 2.35 WB	1-nozzle spray	Finishing

Midwest Tradition® Series

Smaller diameter head

Midwest's Tradition and Tradition Pro handpieces feature a smaller diameter head (9.7mm), and a distinctive grip that enhances both comfort and control as you work.

A redesigned turbine with a new rotor and ceramic bearing set offers significantly more power, while Dynamic Speed Control limits excessive free speeds that can generate noise and cause excess bearing wear. Solid glass fiber optics resist yellowing and improve light transmission for better visibility.

Tradition TC Push Button Coupler End

- Up to 20 watts of power
- New coupler options with 4-port water spray*
- Push button chuck
- 1-year warranty

Tradition TB Push Button Fixed Backend

- Up to 25 watts of power
- Ceramic bearing set and dynamic speed control reduce noise
- Push button chuck
- 1-year warranty

Tradition TL Lever Fixed Backend

- Up to 25 watts of power
- Ceramic bearing set and dynamic speed control reduce noise
- Lever chuck
- 1-year warranty

*Single water port on fixed backend models





**Tradition Pro TCF Push Button
Coupler End**

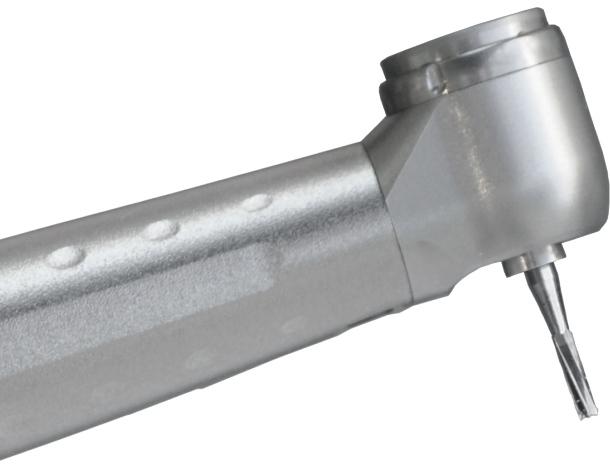
- Up to 20 watts of power
- Coupler backend with 4-port water spray
- Solid glass fiber optics
- Push button chuck
- 1-year warranty

**Tradition Pro TBF Push Button
Fixed Backend**

- Up to 25 watts of power
- Solid glass fiber optics
- Push button chuck
- 1-year warranty

**Tradition Pro TLF Lever
Fixed Backend**

- Up to 25 watts of power
- Solid glass fiber optics
- Lever chuck
- 1-year warranty

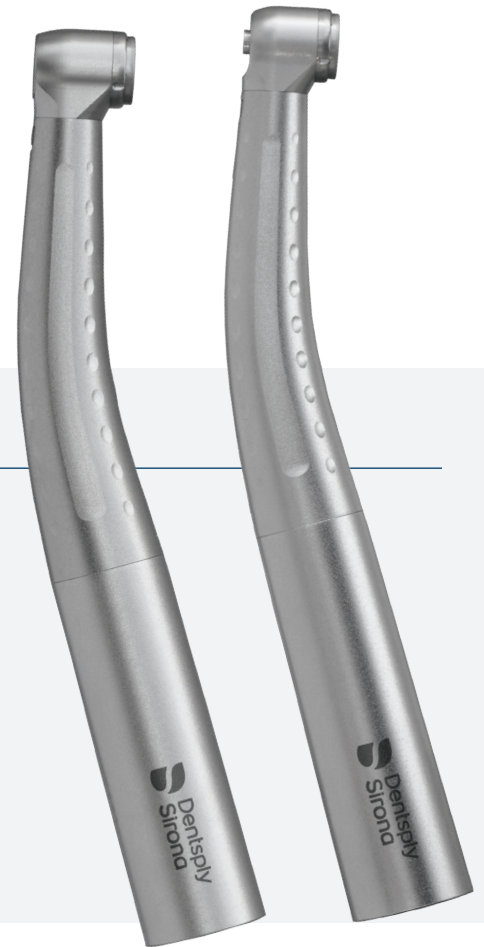


Midwest Stylus® Plus Series

Performance under pressure

Stay in control with the Midwest Stylus Plus. Dynamic Speed Control in the head limits free speed to protect bearings against excessive RPMs at higher pressures—reducing noise without impacting peak cutting power.

Plus, the patented dimple-and-flat-grip design improves tactile feel, index positioning, and control for more confidence as you work.



Stylus Plus

Computer-balanced rotor and tuned airflow minimize vibration and noise

20 watts of power

Ceramic bearings

4-port water spray

Solid glass fiber optics

2-year warranty

Stylus Plus Mini

Shorter head allows for extended bur projection to help with deeper preparations

20 watts of power

Single-port water spray for powerful debris clearing

2-year warranty

Midwest Phoenix[®] Series

Today's technology for today's materials

Titanium-coated sheaths with a distinctive diamond-pattern grip enhance the tactile feel on the Phoenix series. Inside, Diamond-Like Carbon coated ceramic bearings reduce friction and enhance performance. Tuned air flow in the head manages rotor speed, protecting bearings and limiting noise generation, even at higher psi.



Phoenix

Mini-head in multiple backend configurations

20 watts of power

4-port water spray

Solid glass fiber optics

2-year warranty

Phoenix ZR

Ideal for solid zirconia crown removal and crown prep

Deeper chuck accommodates 25mm length burs

Lower free-speed for reduced sound

23 watts of power

4-port water spray

Solid glass fiber optics

2-year warranty

Midwest Low Speed Series

Rhino® XP Single-Speed Air Motor

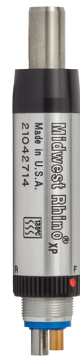
0-6,500 RPM range with outstanding power at any speed

High-torque vane motor with exceptional responsiveness

Lightweight for better handling and comfort

Easy attachment of all modular angle system components

Forward and reverse operation



Shorty® Single-Speed Air Motor

Single-speed air motor operates at 0-6,500 RPM

Angled backend designed to reduce hose drag

Forward and reverse operation



Shorty Two-Speed Air Motor

Two-speed air motor operates at 0-6,000 RPM in lower speed range and 0-30,000 RPM in upper speed range

Angled backend designed to reduce hose drag

Forward and reverse operation



Straight Attachment

For use with Shorty and Rhino XP



Contra Angle Sheath

For use with Shorty and Rhino XP

Recommended for upper and lower speed ranges



Push Button Contra Angle Heads

Recommended for upper and lower speed ranges

Push button

Latch-type or friction grip head



Prophy Contra Angle Head

Recommended for lower speed range only



Prophy Right Angle Sheath

For use with Shorty and Rhino XP lower speed range only



Prophy Right Angle Head

Lower speed range only



Universal Style Adapter

For use with Shorty and Rhino XP

Accepts disposable prophy angles





**Rhino XE™ E-type
Single Speed
Air Motor**

Shorter length for improved ergonomics
Up to 20,000 RPM for quick appliance adjustments and optimal restoration polishing speeds
Forward and reverse operation



**Rhino XE
Straight Attachment**

1:1 gear ratio
Use with Rhino XE air motor



**Rhino XE
Push Button
Contra Angle**

1:1 gear ratio
Use with Rhino XE air motor



**Rhino XE
U-style Adapter**

7:1 gear ratio
Use with Rhino XE air motor



**K-style
Straight Attachment**

1:1 gear ratio
Use with 16mm diameter K-style E-type air motors



**K-style
Push Button
Contra Angle**

1:1 gear ratio
Use with 16mm diameter K-style E-type air motors



Specifications

Midwest Tradition

	Tradition TC Push Button Sirona Backend	Tradition TB Push Button Fixed Backend	Tradition TL Lever Fixed Backend	Tradition Pro TCF Push Button K-style Backend	Tradition Pro TBF Push Button Fixed Backend	Tradition Pro TLF Lever Fixed Backend
Watts (approximate)	20	25	25	20	25	25
Sound*	61 dBa	61 dBa	61 dBa	61 dBa	61 dBa	61 dBa
Free Speed*	410,000 RPM	410,000 RPM	410,000 RPM	410,000 RPM	410,000 RPM	410,000 RPM
Water Ports	4	1	1	4	1	1
Fiber Optic	No	No	No	Yes	Yes	Yes
Bearing Type	Ceramic	Ceramic	Ceramic	Ceramic	Ceramic	Ceramic
Weight	< 55 grams	< 50 grams	< 50 grams	< 55 grams	< 50 grams	< 50 grams
Head Size (Dia x Ht)	9.7mm x 12.8mm	9.7mm x 12.7mm	9.7mm x 13.8mm	9.7mm x 12.8mm	9.7mm x 12.7mm	9.7mm x 13.8mm
Maximum Bur Length	21.0 mm	21.0 mm	21.0 mm	21.0 mm	21.0 mm	21.0 mm
Warranty	1 year	1 year	1 year	1 year	1 year	1 year

Midwest Stylus Plus

	Stylus Plus SPM Midwest Backend	Stylus Plus SPS Sirona Backend	Stylus Plus SPN NSK Backend	Stylus Plus SPK K-style Backend	Stylus Plus SPW W-style Backend	Stylus Plus Mini Midwest Backend	Stylus Plus Mini K-style Backend
Watts (approximate)	20	20	20	20	20	20	20
Sound*	60 dBa	60 dBa	60 dBa	60 dBa	60 dBa	60 dBa	60 dBa
Free Speed*	410,000 RPM	410,000 RPM	410,000 RPM	410,000 RPM	410,000 RPM	410,000 RPM	410,000 RPM
Water Ports	4	4	4	4	4	1	1
Fiber Optic	Yes	Yes	Yes	Yes	Yes	Yes	Yes
Bearing Type	Ceramic	Ceramic	Ceramic	Ceramic	Ceramic	Ceramic	Ceramic
Weight	< 55 grams	< 55 grams	< 55 grams	< 55 grams	< 55 grams	< 55 grams	< 55 grams
Head Size (Dia x Ht)	9.7mm x 12.7mm	9.7mm x 12.7mm	9.7mm x 12.7mm	9.7mm x 12.7mm	9.7mm x 12.7mm	9.7mm x 11.8mm**	9.7mm x 11.8mm**
Maximum Bur Length	21.0 mm	21.0 mm	21.0 mm	21.0 mm	21.0 mm	21.0 mm	21.0 mm
Warranty	2 year	2 year	2 year	2 year	2 year	2 year	2 year

Midwest Phoenix

	Phoenix Midwest Backend	Phoenix Sirona Backend	Phoenix NSK Backend	Phoenix K-style Backend	Phoenix ZR K-style Backend
Watts (approximate)	20+	20+	20+	20+	23+
Sound*	59 dBa	59 dBa	59 dBa	59 dBa	58 dBa
Free Speed*	410,000 RPM	410,000 RPM	410,000 RPM	410,000 RPM	370,000 RPM
Water Ports	4	4	4	4	4
Fiber Optic	Yes	Yes	Yes	Yes	Yes
Bearing Type	DLC Ceramic	DLC Ceramic	DLC Ceramic	DLC Ceramic	DLC Ceramic
Weight	< 55 grams	< 55 grams	< 55 grams	< 55 grams	< 55 grams
Head Size (Dia x Ht)	9.7mm x 12.7mm	9.7mm x 12.7mm	9.7mm x 12.7mm	9.7mm x 12.7mm	11.4mm x 12.7mm
Maximum Bur Length	21.0 mm	21.0 mm	21.0 mm	21.0 mm	25.0 mm
Warranty	2 year	2 year	2 year	2 year	2 year

*Approximate values. Free speed and sound measured without water spray. **Excludes bur tube.

Midwest Quiet-Air®

	Quiet-Air Push Button • Midwest Backend
Watts (approximate)	30
Sound*	61 dBa
Free Speed*	410,000 RPM
Water Ports	1
Fiber Optic	No
Bearing Type	Ceramic
Weight	< 50 grams
Head Size (Dia x Ht)	11.4mm x 12.7mm
Maximum Bur Length	25mm
Warranty	6 months

Low Speed Motors

	Rhino XP Single Speed	Shorty Single Speed	Shorty Two Speed	Rhino XE Single Speed E-type
Speed Range	0-6,500 RPM	0-6,000 RPM	0-6,000 RPM, 0-30,000 RPM	0-20,000 RPM
Direction	Forward/Reverse	Forward/Reverse	Forward/Reverse	Forward/Reverse
Optics	Non-Fiber Optic	Non-Fiber Optic	Non-Fiber Optic	Non-Fiber Optic
Hose Type	4-hole connection	4-hole connection	4-hole connection	4-hole connection
Motor Warranty	1 Year	1 Year	1 Year	1 Year

Low Speed Attachments

	Straight Attachment	Contra Angle Sheath	Push Button Contra Angle Head Friction Grip	Push Button Contra Angle Head Latch Type	Prophy Contra Angle Head	Prophy Right Angle Sheath	Prophy Right Angle Head	Universal Style Adapter
Gear Ratio/Speed	1:1	1:1	Upper Speed Range	Lower Speed Range	Lower Speed Range	1:1	Lower Speed Range	1:1
Attachment Type	Rhino XP or Shorty	Rhino XP or Shorty	Contra Angle Sheath	Contra Angle Sheath	Contra Angle Sheath	Rhino XP or Shorty	Right Angle Sheath	Rhino XP or Shorty
Weight	50 grams	22 grams	14 grams	14 grams	14 grams	30 grams	4 grams	14 grams
Length	91 mm	79 mm	37 mm	37 mm	36 mm	92 mm	16 mm	46 mm
Warranty	6 months	6 months	3 months	3 months	3 months	6 months	3 months	6 months

E-type Low Speed Attachments

	Rhino XE Straight Attachment	Rhino XE Push Button Contra Angle	K-style U-style Adapter	K-style Straight Attachment	K-style Push Button Contra Angle
Gear Ratio/Speed	1:1	1:1	7:1	1:1	1:1
Attachment Type	Rhino XE	Rhino XE	Rhino XE	16mm E-type motor	16mm E-type motor
Weight	79 grams	72 grams	97 grams	66 grams	62 grams
Length	84mm	93mm	98mm	84mm	93mm
Warranty	1 Year	1 Year	1 Year	1 Year	1 Year

Contact your A-dec dealer or Territory Manager to learn more about the Midwest motor system and retrofit eligibility.



Midwest Nupro RDH[®]

Exceptional ergonomics for prophylaxis

Midwest's best-selling prophy handpiece offers exceptional ergonomics in a lightweight design that reduces hand and wrist fatigue. The 360° cord swivels for better maneuverability and access to all areas of the oral cavity. The wide-back end design neutralizes hand position with specifically designed contours. And a smooth, low-pressure start protects both hygienist and patient from splatter during procedures.



Nupro RDH Hygienist Handpiece

- Nonslip grip
- Slim, lightweight design
- Fully autoclavable parts
- Removable color bands for handpiece personalization
- 2-year warranty

Midwest Automate®

Easy, efficient handpiece maintenance

Automate delivers precise cleaning, lubricating and debris removal to promote handpiece turbine life. By eliminating the need for manual handpiece maintenance, the Midwest Automate reduces handling time by more than 80 percent. So you and your staff can spend less time on maintenance and more time caring for patients.



Simple Control Panel

One-touch start buttons and indicator lights

Three Cleaning Ports

Securely hold almost any handpiece

Absorption Pad

Catches oil and debris for easy cleanup

Door Lining

Rubber seal limits odors and spray fumes

Door Safety Magnets

Holds door shut during maintenance

Rugged Design

Backed by a 3-year warranty

Reliable Creative Solutions

FOR DENTAL PROFESSIONALS WORLDWIDE

 @A-decDental

 @A-decDental

 @A-dec Inc.

 @AdecDental

 @A-dec Inc.

A-dec Headquarters

2601 Crestview Drive

Newberg, Oregon 97132 USA

P: 1.800.547.1883 within USA/CAN

P: +1.503.538.7478 outside USA/CAN

a-dec.com

Other Locations

A-dec Nashville Experience Center

A-dec Australia

A-dec United Kingdom

Not available in all regions. Check with your authorized A-dec dealer for local availability.

Energio™, Tradition®, Stylus®, Phoenix®, Rhino®, Shorty®, Rhino XE™, Nupro RDH®, Automate® and QuietAir® are registered marks of Dentsply Sirona.

The products shown may vary and are subject to change without notice. Contact your authorized A-dec dealer for the most current product information. All trademarks in this document are subject to the trademark rights of A-dec, its affiliates, and their collective suppliers in the United States and foreign countries.

©2026 A-dec Inc. All rights reserved. 85.1100.00/PP/2.5M/2-26/Rev A

